

In our continuing effort for product improvement, all DS85 consoles have now been redesigned with a new faceplate and hardware. This new faceplate is compatible with all DS85 systems. Please follow the installation instructions below for faceplate replacement.



All hardware required for the replacement will be supplied in the kit.

P/N: **024-085-100-002** Obsolete;
replaced by P/N: **536336** (Direct Replacement)

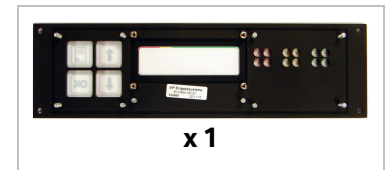
Required Tools:

Phillips Screwdriver(s)
5 mm Socket
5.5 mm Socket

Replacement Instructions

1. Confirm that you have received all items required for the replacement:

- Qty (8) - Black Plastic Spacers
- Qty (8) - Metal Threaded Standoffs
- Qty (1) - DS85 Faceplate



2. On the DS85 console, remove the four Phillips screws and washers from the back of the housing. *Retain these screws and washers; they will be needed when you reassemble the console.*



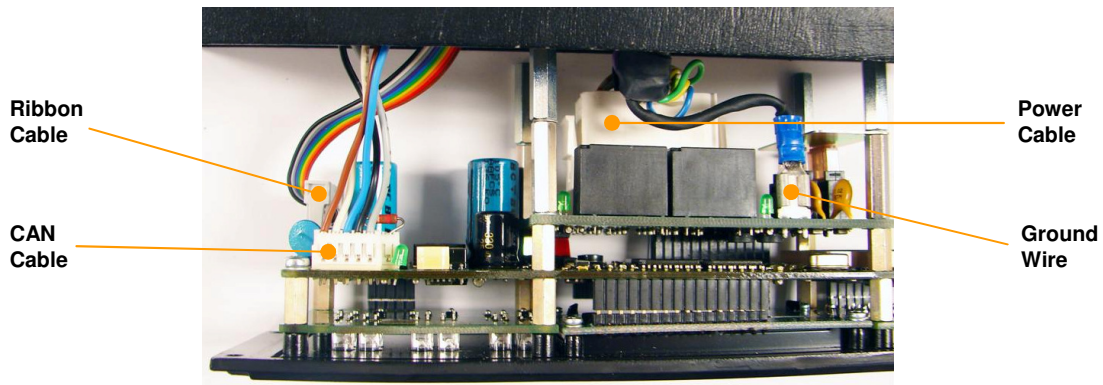
(Figure A)

- Next, remove the four Phillips screws from the front of the console housing. *Retain these screws; they will be needed when you reassemble the console.*



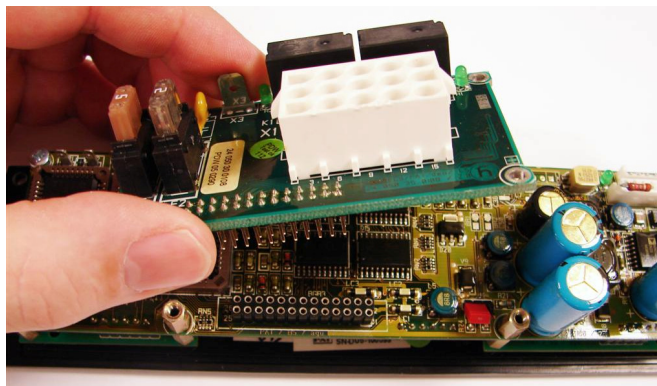
(Figure B)

- Disconnect the wiring to the board assembly.



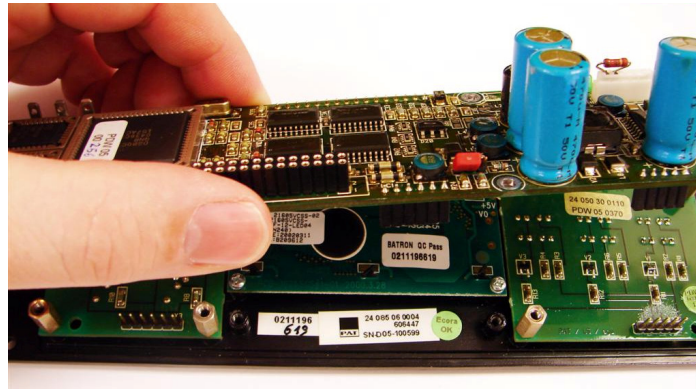
(Figure C)

- Using a 5.5 mm socket, remove the Fuse / Connector board. *Once removed, retain all hardware. It can be helpful to keep the hardware for each board separated with the boards as you remove them. This will make it easier to use the correct hardware during reassembly.*



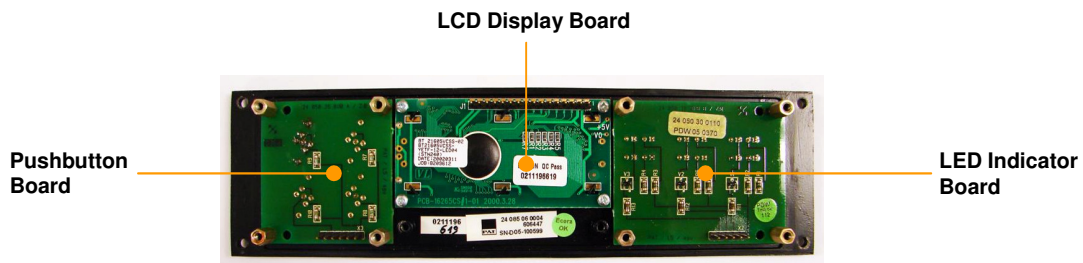
(Figure D)

- Next, remove the Main Board using a 5 mm socket and Phillips screwdriver.



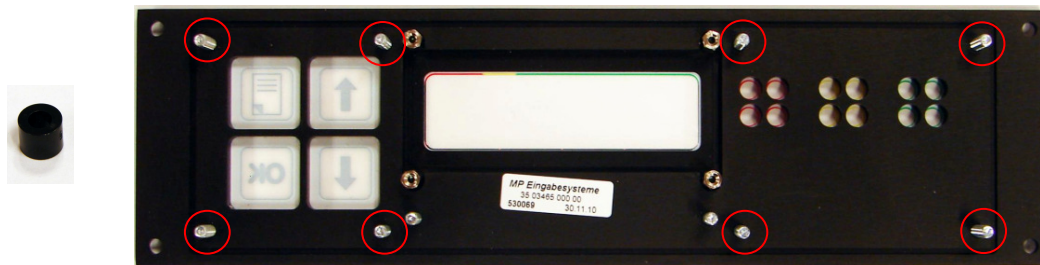
(Figure E)

- Now you can remove the final three boards. Use a 5 mm socket to remove the Pushbutton board and the LED Indicator board. Use a Phillips screwdriver to remove the LCD Display board. *Again, keep all hardware separate with each board.*



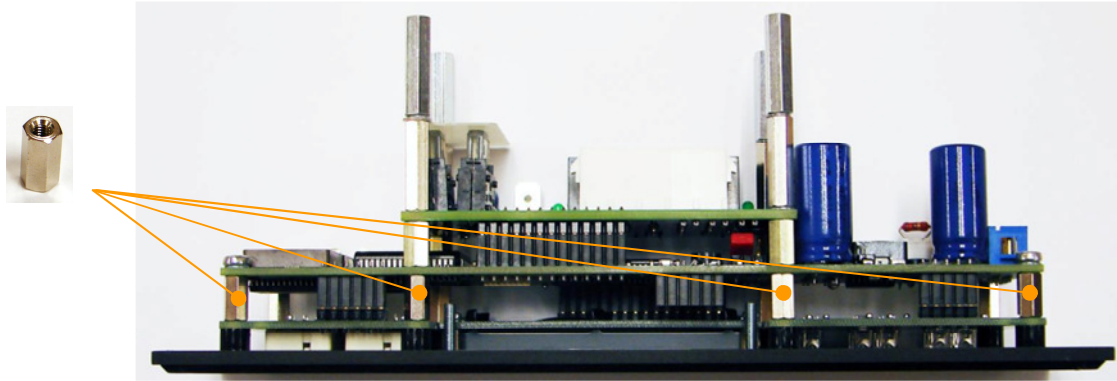
(Figure F)

- When you have the unit disassembled, take the new faceplate and install the eight black plastic spacers over the eight threaded studs (figure G).



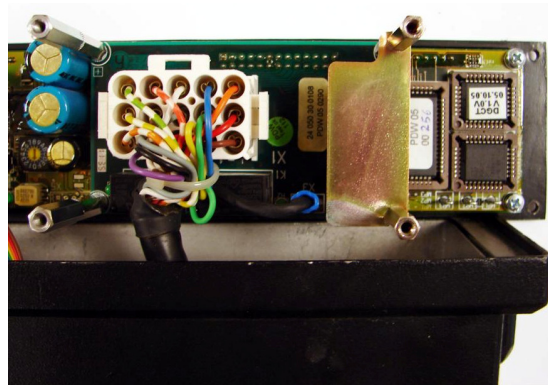
(Figure G)

9. Install the pushbutton board and the LED indicator board using the eight metal threaded standoffs provided in the kit. *(These replace the original standoffs; the old were male/female, the new are female/female).*



(Figure H)

10. Reinstall the LCD Display board with the original Phillips screws. ***During installation, check the visibility of the LCD display and ensure that it is clearly visible and free of any dirt or debris. Also verify that the long connector is oriented as shown in figure F.***
11. Reinstall the Main board using a 5 mm socket and Phillips screwdriver along with the original standoffs and Phillips screws *(figure E)*. ***Ensure that all plug-in connectors are seated properly.***
12. Next, reinstall the Fuse / Connector board using a 5.5 mm socket and the original standoffs *(figure D)*. ***Ensure that all plug-in connectors are seated properly. Also, ensure that the shield located over the fuses is oriented as shown below (figure J). If it is installed improperly, the assembly will not fit into the housing.***



(Figure J)

13. Reconnect the wiring *(figure C)*.

14. Insert the assembly back into the housing and screw the four Phillips screws into the back of the housing (figure A). **It is very important to ensure that the wires or ribbon cables are not pinched during this process.** Do not fully tighten the screws; it will make it easier to align the screw on the front of the housing.
15. Reinstall the four Phillips screws on the front faceplate (figure B). Once installed, you can now tighten the screws on the back of the housing.
16. The replacement is now complete.

Note: There is no warranty of any kind for this replacement. Any damages incurred during this process are the responsibility of the end user (party performing the replacement). Please contact your local dealer if additional information is required to complete this process.



Hirschmann Automation and Control
1540 Orchard Drive
Chambersburg, PA 17201

Service : (717) 217-2250
Parts / Sales : (717) 217-2269

www.hirschmann-usa.com

