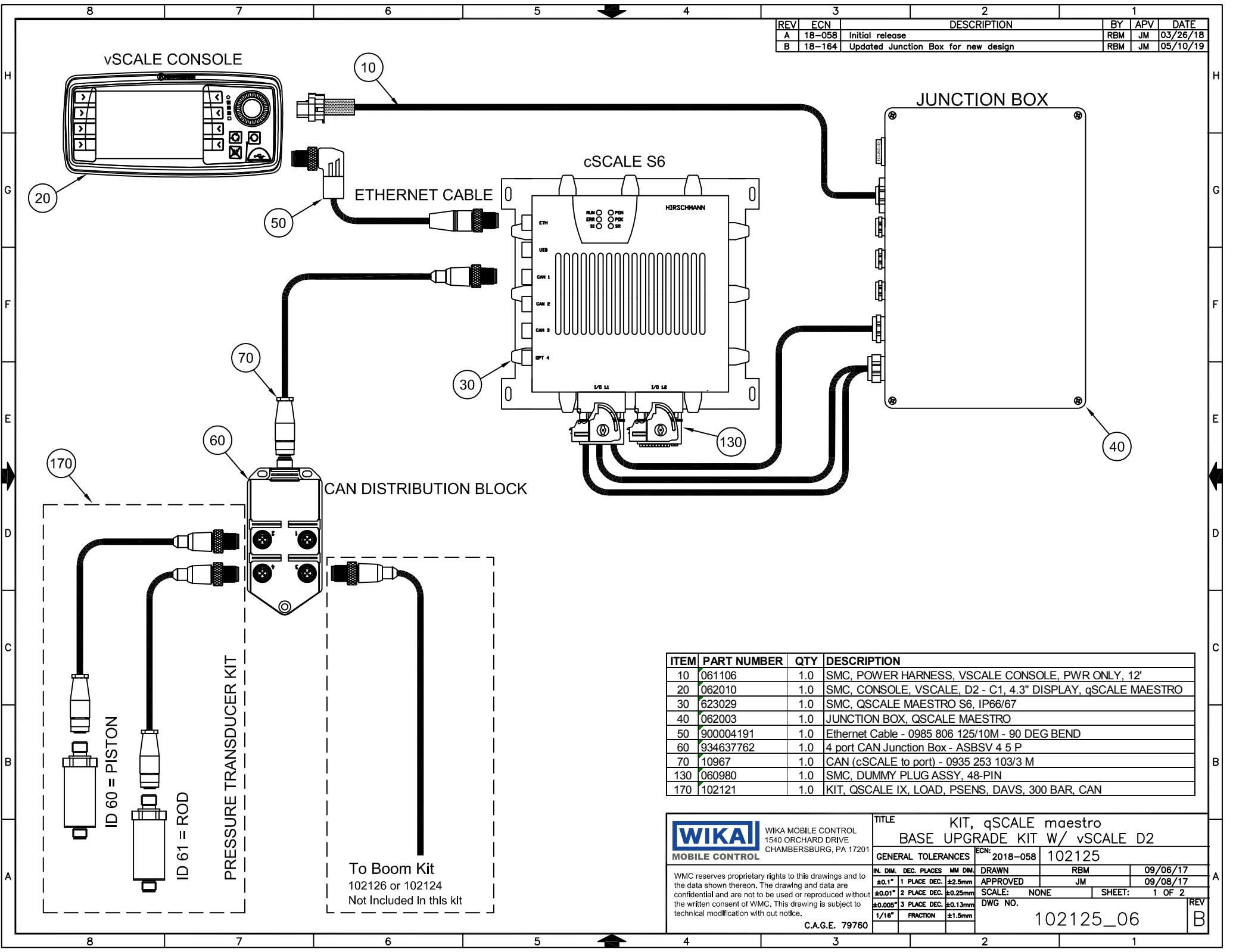


REV	ECN	DESCRIPTION	BY	APV	DATE
A	18-058	Initial release	RBM	JM	03/26/18
B	18-164	Updated Junction Box for new design	RBM	JM	05/10/19



ITEM	PART NUMBER	QTY	DESCRIPTION
10	061106	1.0	SMC, POWER HARNESS, VSCALE CONSOLE, PWR ONLY, 12'
20	062010	1.0	SMC, CONSOLE, VSCALE, D2 - C1, 4.3" DISPLAY, qSCALE MAESTRO
30	623029	1.0	SMC, QSCALE MAESTRO S6, IP66/67
40	062003	1.0	JUNCTION BOX, QSCALE MAESTRO
50	900004191	1.0	Ethernet Cable - 0985 806 125/10M - 90 DEG BEND
60	934637762	1.0	4 port CAN Junction Box - ASBSV 4 5 P
70	10967	1.0	CAN (cSCALE to port) - 0935 253 103/3 M
130	060980	1.0	SMC, DUMMY PLUG ASSY, 48-PIN
170	102121	1.0	KIT, QSCALE IX, LOAD, PSENS, DAVS, 300 BAR, CAN

	WIKI MOBILE CONTROL 1540 ORCHARD DRIVE CHAMBERSBURG, PA 17201		TITLE KIT, qSCALE maestro BASE UPGRADE KIT W/ vSCALE D2	
	GENERAL TOLERANCES IN. DIM. DEC. PLACES MM DIM. PLACE DEC. DEC. ±0.1" 1 PLACE DEC. ±2.5mm ±0.01" 2 PLACE DEC. ±0.25mm ±0.005" 3 PLACE DEC. ±0.13mm 1/16" FRACTION ±1.5mm		ECN: 2018-058 102125 DRAWN: RBM APPROVED: JM SCALE: NONE DWG NO. 102125_06 SHEET: 1 OF 2	
WMC reserves proprietary rights to this drawings and to the data shown thereon. The drawing and data are confidential and are not to be used or reproduced without the written consent of WMC. This drawing is subject to technical modification with out notice.			REV: B DATE: 09/06/17 DATE: 09/08/17	
C.A.G.E. 79760			REV: B	