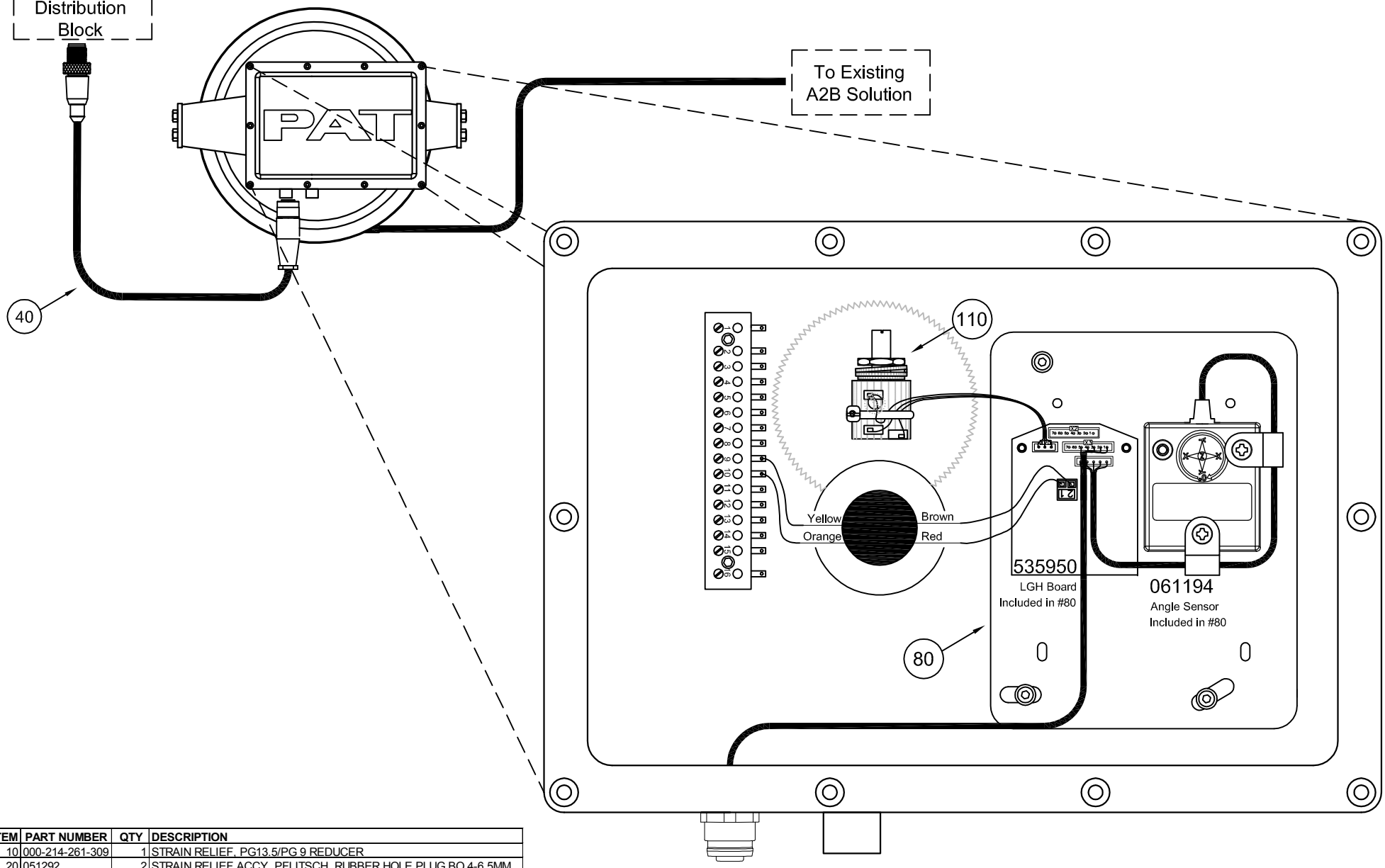


REV	ECN	DESCRIPTION	BY	APV	DATE
A	-	Initial release	RBM	JM	09/05/17
B		Updated Title Block and Removed Connector	RBM	JM	11/20/18

To CAN
Distribution
Block

To Existing
A2B Solution

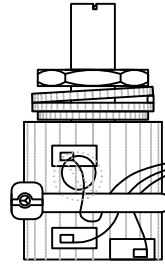
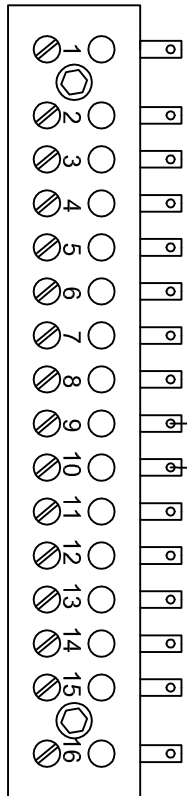


ITEM	PART NUMBER	QTY	DESCRIPTION
10	000-214-261-309	1	STRAIN RELIEF, PG13.5/PG 9 REDUCER
20	051292	2	STRAIN RELIEF ACCY. PFLITSCH RUBBER HOLE PLUG BO 4-6.5MM
30	051293	2	STRAIN RELIEF ACCY. PFLITSCH RUBBER HOLE PLUG BO 9-13MM
40	27866	1	0935 253 103/15 M
50	000-214-340-013	1	STRAIN RELIEF, PG13.5 HOLE PLUG
60	000-214-261-109	1	STRAIN RELIEF, PG11/PG9 REDUCER
70	000-214-340-011	1	STRAIN RELIEF, PG11 HOLE PLUG
80	061185	1	SENSOR ASSY, LENGTH/ANGLE, W/GX/CAN
90	002-050-206-012	3	SCREW, 6mm X 12mm SOCKET CAP
100	000-207-010-064	3	WASHER, FLAT 6MM
110	067-000-100-204	1	SENSOR, LENGTH POT.W/O RESISTORS, CW ROTATION

		WIKAI MOBILE CONTROL 1540 ORCHARD DRIVE CHAMBERSBURG, PA 17201		TITLE qSCALE maestro, BOOM UPGRADE FROM EXISTING 200/208/209 REEL	
GENERAL TOLERANCES		ECN: 102124		DRAWN RBM 09/06/17	
$\pm 0.1"$ 1 PLACE DEC.	$\pm 2.5mm$	APPROVED JM 09/08/17		SHEET: 1 OF 1	
$\pm 0.01"$ 2 PLACE DEC.	$\pm 0.25mm$	SCALE: NONE		DWG NO. 102124_06	
$\pm 0.005"$ 3 PLACE DEC.	$\pm 0.13mm$	SCALE: NONE		REV B	
$1/16"$ FRACTION	$\pm 1.5mm$	C.A.G.E. 79760		DATE 11/20/18	

067-000-100-204

Length potentiometer



Yellow
Orange

Brown
Red

535950
LGH Board

061194
Angle Sensor

