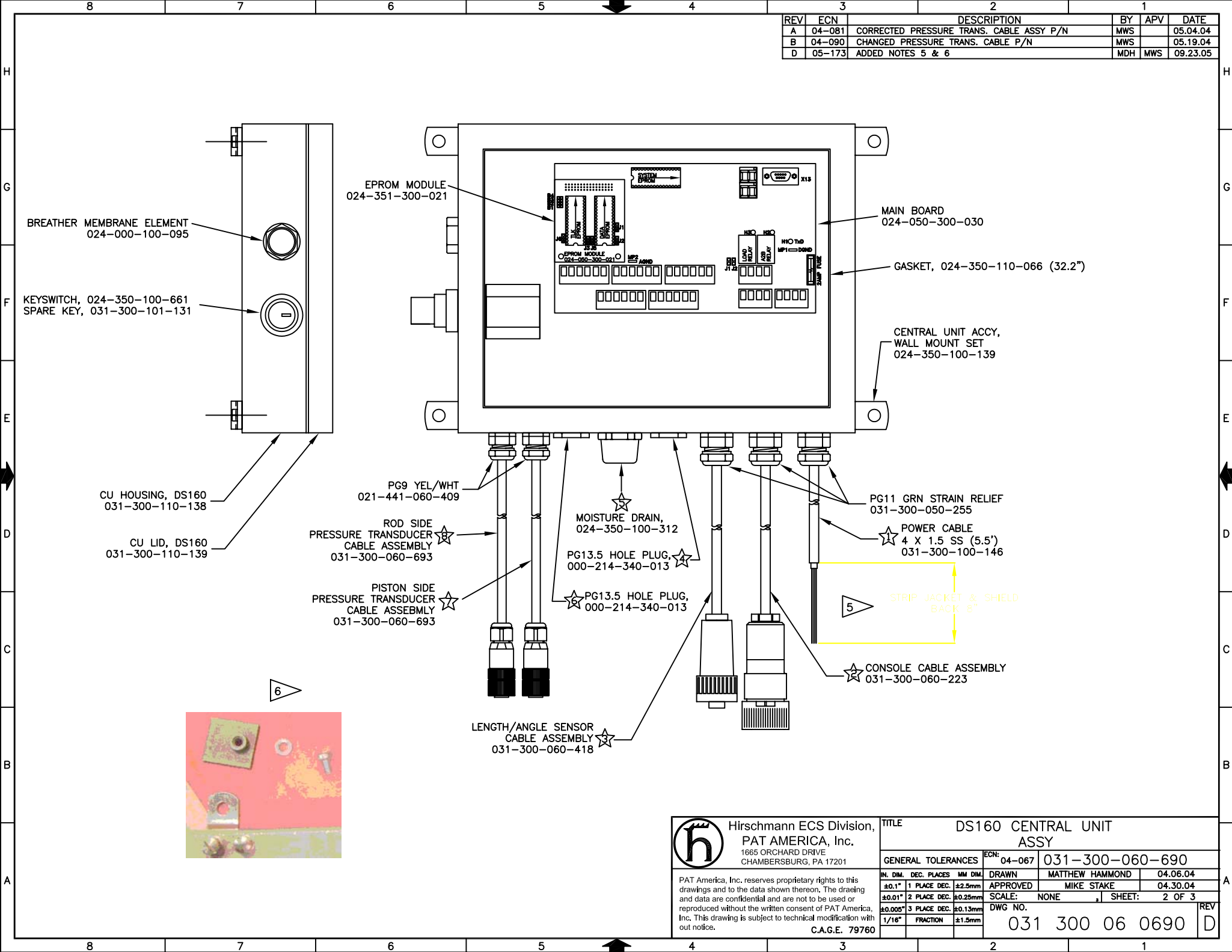
 Hirschmann ECS Division, PAT AMERICA, Inc. 1665 ORCHARD DRIVE CHAMBERSBURG, PA 17201	TITLE DS160 CENTRAL UNIT	
	GENERAL TOLERANCES	ECN: 04-067 031-300-060-690
IN. DIM. DEC. PLACES MM DIM. ±0.1" 1 PLACE DEC. ±2.5mm ±0.01" 2 PLACE DEC. ±0.25mm ±0.005" 3 PLACE DEC. ±0.13mm 1/16" FRACTION ±1.5mm	DRAWN MATTHEW HAMMOND 04.06.04 APPROVED MIKE STAKE 04.30.04 SCALE: NONE SHEET: 1 OF 3	DWG NO. 031 300 06 0690 REV D
PAT America, Inc. reserves proprietary rights to this drawings and to the data shown thereon. The draeing and data are confidential and are not to be used or reproduced without the written consent of PAT America, Inc. This drawing is subject to technical modification with out notice. C.A.G.E. 79760		

REV	ECN	DESCRIPTION	BY	APV	DATE
A	04-081	CORRECTED PRESSURE TRANS. CABLE ASSY P/N	MWS		05.04.04
B	04-090	CHANGED PRESSURE TRANS. CABLE P/N	MWS		05.19.04
D	05-173	ADDED NOTES 5 & 6	MDH	MWS	09.23.05



EPROM MODULE  
024-351-300-021

MAIN BOARD  
024-050-300-030

BREATHER MEMBRANE ELEMENT  
024-000-100-095

GASKET, 024-350-110-066 (32.2")

KEYSWITCH, 024-350-100-661  
SPARE KEY, 031-300-101-131

CENTRAL UNIT ACCY,  
WALL MOUNT SET  
024-350-100-139

CU HOUSING, DS160  
031-300-110-138

PG9 YEL/WHT  
021-441-060-409

PG11 GRN STRAIN RELIEF  
031-300-050-255

CU LID, DS160  
031-300-110-139

ROD SIDE  
PRESSURE TRANSDUCER  
CABLE ASSEMBLY  
031-300-060-693

MOISTURE DRAIN,  
024-350-100-312

POWER CABLE  
4 X 1.5 SS (5.5")  
031-300-100-146

PISTON SIDE  
PRESSURE TRANSDUCER  
CABLE ASSEMBLY  
031-300-060-693

PG13.5 HOLE PLUG,  
000-214-340-013

STRIP JACKET & SHIELD  
BACK 8"

6

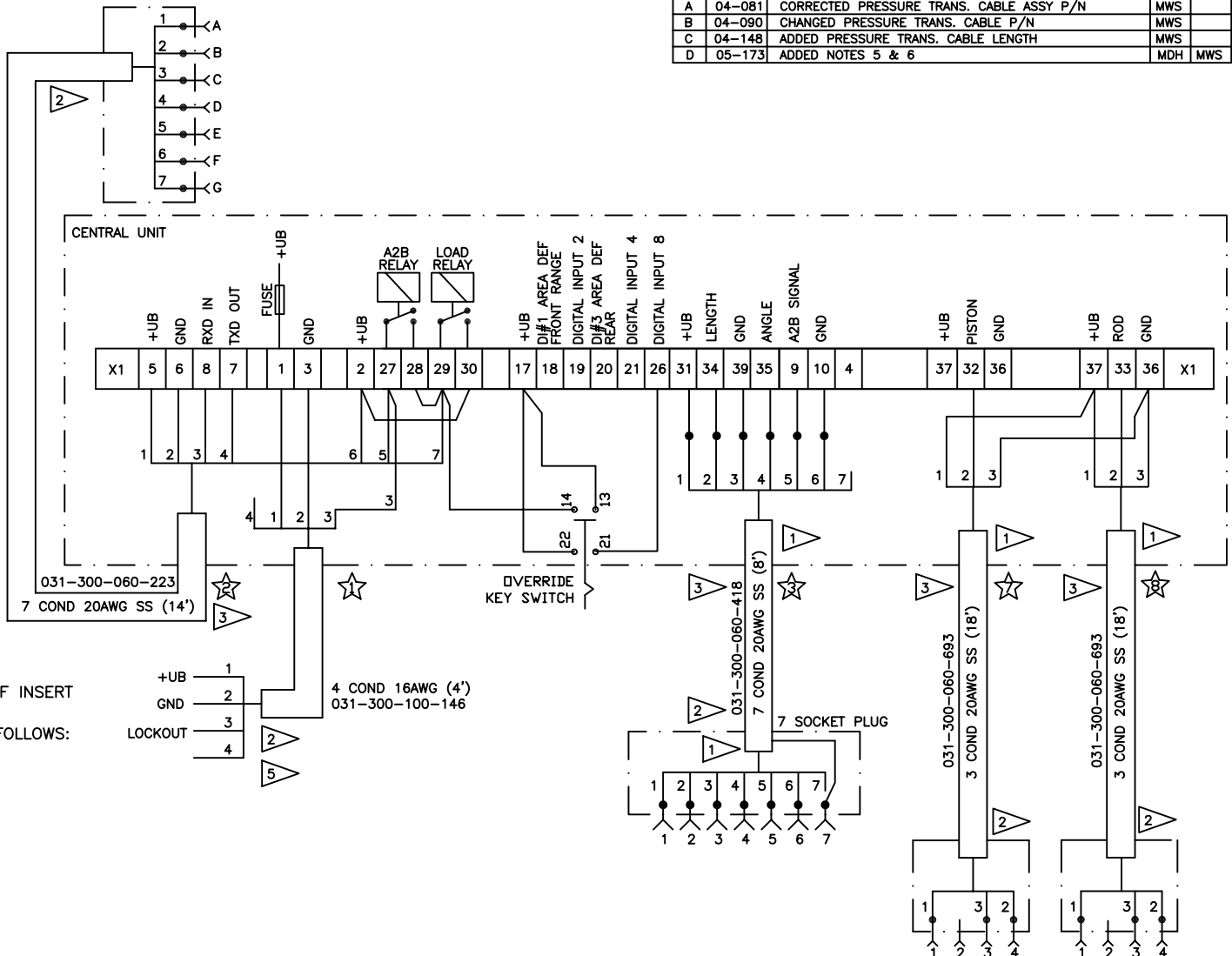
LENGTH/ANGLE SENSOR  
CABLE ASSEMBLY  
031-300-060-418

CONSOLE CABLE ASSEMBLY  
031-300-060-223



		Hirschmann ECS Division,		TITLE	
		PAT AMERICA, Inc. 1665 ORCHARD DRIVE CHAMBERSBURG, PA 17201		DS160 CENTRAL UNIT ASSY	
GENERAL TOLERANCES		ECN: 04-067	031-300-060-690		
±0.1"	1 PLACE DEC.	±2.5mm	DRAWN	MATTHEW HAMMOND	04.06.04
±0.01"	2 PLACE DEC.	±0.25mm	APPROVED	MIKE STAKE	04.30.04
±0.005"	3 PLACE DEC.	±0.13mm	SCALE: NONE	SHEET: 2 OF 3	
1/16"	FRACTION	±1.5mm	DWG NO.		REV
		031 300 06 0690		D	
		C.A.G.E. 79760			

REV	ECN	DESCRIPTION	BY	APV	DATE
A	04-081	CORRECTED PRESSURE TRANS. CABLE ASSY P/N	MWS		05.04.04
B	04-090	CHANGED PRESSURE TRANS. CABLE P/N	MWS		05.19.04
C	04-148	ADDED PRESSURE TRANS. CABLE LENGTH	MWS		08.26.04
D	05-173	ADDED NOTES 5 & 6	MDH	MWS	09.23.05



**NOTES:**

- TAPE AND STOW ALL WIRES NOT CONNECTED
- 1 OUTER SHIELD CONNECTED TO STRAIN RELIEF INSERT
- 2 LABELS FOR CABLE IDENTIFICATION ARE AS FOLLOWS:
  - ☆ TO POWER/ANTI-TWO BLOCK SWITCH
  - ☆ TO CONSOLE
  - ☆ TO CABLE REEL
  - ☆ HOLE PLUG (NO LABEL REQUIRED)
  - ☆ MOISTURE DRAIN (NO LABEL REQUIRED)
  - ☆ HOLE PLUG (NO LABEL REQUIRED)
  - ☆ TO PISTON SIDE PRESSURE TRANSDUCER
  - ☆ TO ROD SIDE PRESSURE TRANSDUCER
- 3 CABLE LENGTH SHOWN ON CABLE ASSEMBLIES ARE MEASURED FROM STRAIN RELIEF TO STRAIN RELIEF.
- 4 INNER SHIELD CUT AND INSULATED.
- 5 SHIELD AND JACKET STRIPPED 8" BACK, SEE SHEET 2
- 6 REMOVE AND DISCARD ALL (4) WELD FEET AND MOUNTING HARDWARE. SEE SHEET 2.

LEGEND	
BRN	BROWN
BLK	BLACK
WHT	WHITE
GRA	GRAY
GRN	GREEN
BLU	BLUE
RED	RED
PNK	PINK
ORG	ORANGE
YEL	YELLOW
VIO	VIOLET
SHD	SHIELD
IS	INNER SHIELD
SS	SINGLE SHIELDED
DS	DOUBLE SHIELDED
NC	NORMALLY CLOSED
NO	NORMALLY OPEN

<b>Hirschmann ECS Division,</b> <b>PAT AMERICA, Inc.</b> 1685 ORCHARD DRIVE CHAMBERSBURG, PA 17201	<b>TITLE</b> DS160 CENTRAL UNIT WIRING SCHEMATIC	
	<b>GENERAL TOLERANCES</b> IN. DIM. DEC. PLACES MM DIM. ±0.1" 1 PLACE DEC. ±2.5mm ±0.01" 2 PLACE DEC. ±0.25mm ±0.005" 3 PLACE DEC. ±0.13mm 1/16" FRACTION ±1.5mm	<b>ECN:</b> 04-067 <b>APPROVED</b> SCALE: NONE DWG NO.
PAT America, Inc. reserves proprietary rights to this drawings and to the data shown thereon. The draefing and data are confidential and are not to be used or reproduced without the written consent of PAT America, Inc. This drawing is subject to technical modification with out notice. C.A.G.E. 79760	<b>031 300 06 0690</b>	