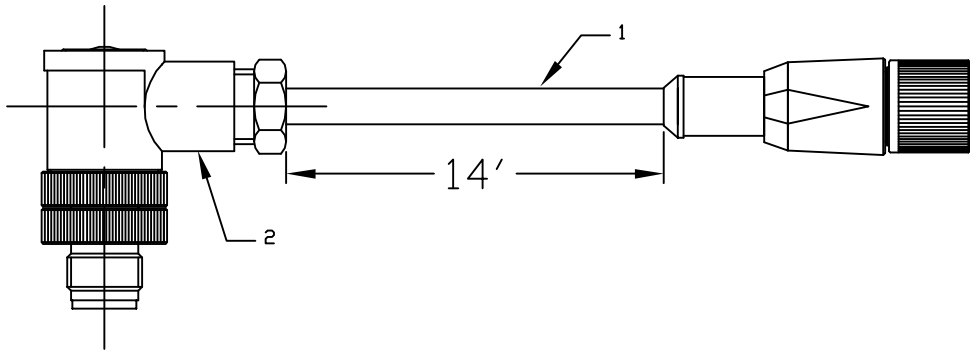
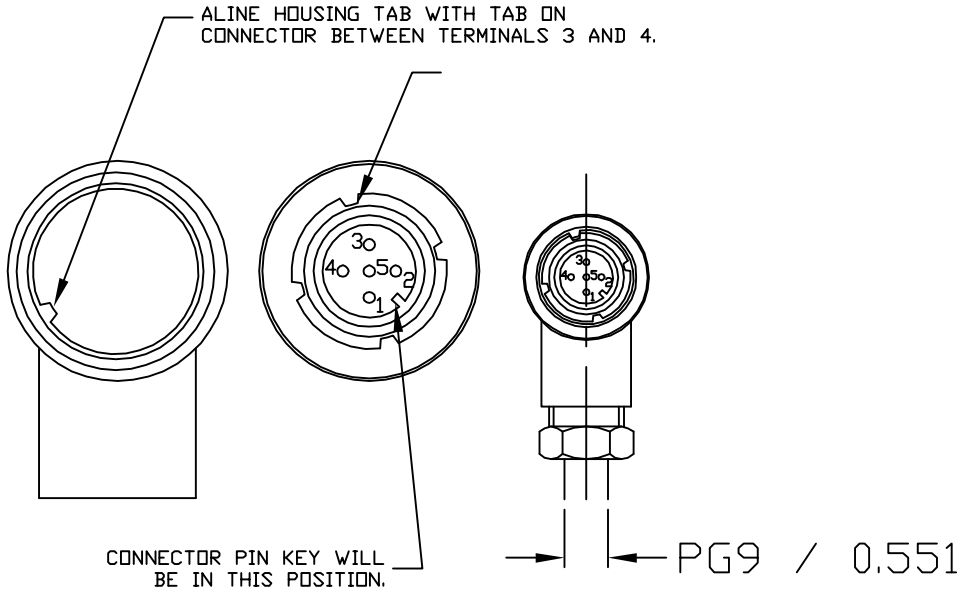
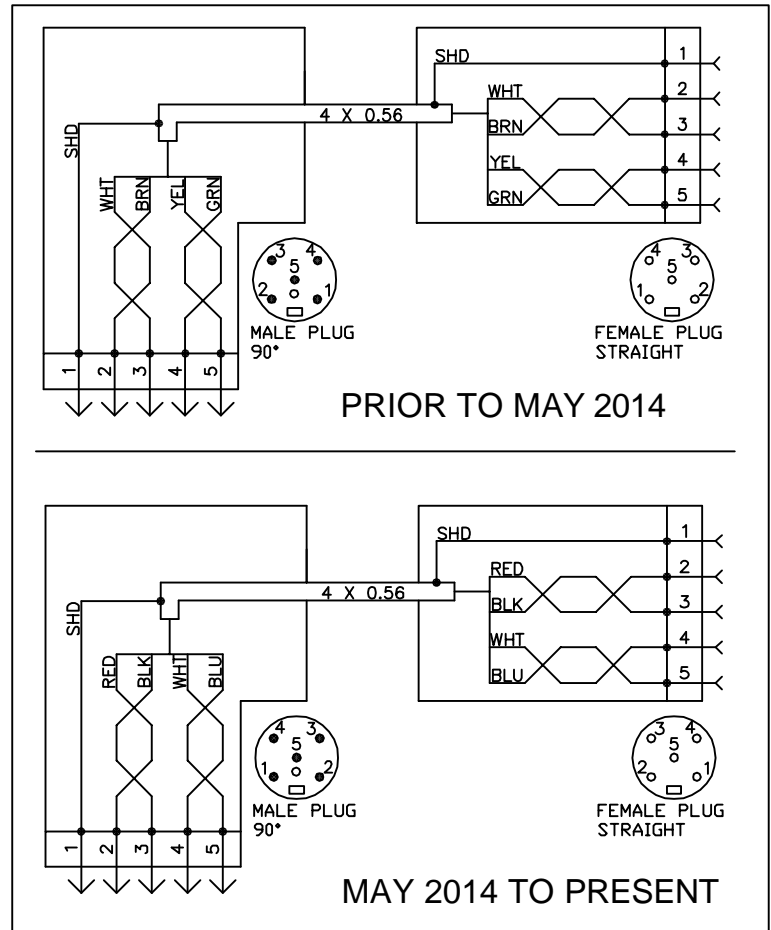


REV	ECN	DESCRIPTION	BY	APV	DATE
D	14-133	ADD PIN IDENTIFICATION FOR MAY 2014 TO PRESENT	AJC	JM	06/09/14
E	14-166	CHANGE DIAMETER OF CONNECTOR	AJC	PM	07/22/14
F	14-207	CORRECTED PIN ASSIGNMENT	AJC	PM	09/11/14



PIN ASSIGNMENT



Male / Female Connector	Function	Color
5 Poles		
Pin 1	Shield	-
Pin 2	+ 24 V	Red
Pin 3	GND (0V)	Black
Pin 4	CAN_H	White
Pin 5	CAN_L	Blue

NOTE:
1. OPTIONAL KEY PLACEMENT (4x) @ 90°

Hirschmann Electronics, Inc.
ECS Division
1685 ORCHARD DRIVE
CHAMBERSBURG, PA 17201

Hirschmann Electronics, Inc. reserves proprietary rights to this drawing and to the data shown thereon. The drawing and data are confidential and are not to be used or reproduced without the written consent of Hirschmann Electronics, Inc. This drawing is subject to technical modification with out notice. C.A.G.E. 79760

TITLE CABLE ASSY, 14' CAN BUS PT SENSOR FOR DS85 90°

GENERAL TOLERANCES ECN: - 031-300-060-453

IN. DIM.	DEC. PLACES	MM DIM.	DRAWN	CSH	06/20/03
±0.1"	1 PLACE DEC.	±2.5mm	APPROVED	CSH	06/20/03
±0.01"	2 PLACE DEC.	±0.25mm	SCALE:	NONE	SHEET: 1 OF 1
±0.005"	3 PLACE DEC.	±0.13mm	DWG NO.		REV
1/16"	FRACTION	±1.5mm			F

0453_F06