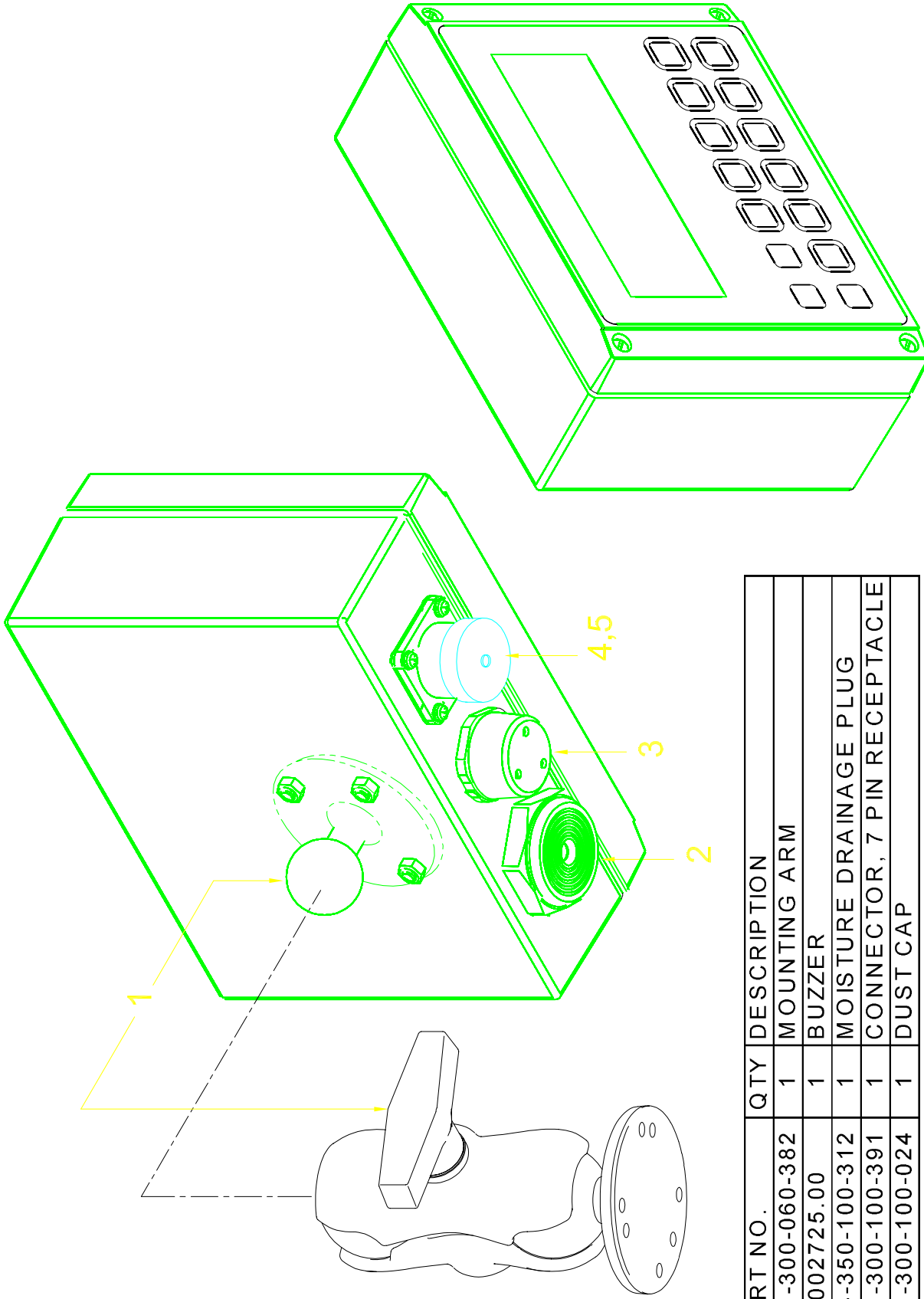




DWG NO. 031 300 060 362 REVISION -
PAGE 2 OF 2
PART NO. 031-300-060-362
DS160 CONSOLE PARTS LIST

NO.	PART NO.	QTY	DESCRIPTION
01	050-050-300-030	1	MAIN BOARD, DS160
02	050-000-100-267	1	DISPLAY, LCD, DS160 CONSOLE DISPLAY 4mm x 20mm
03	050-050-300-036	1	KEY BOARD WITH BUTTONS AND RELAYS
04	2-0002725.00	1	BUZZER
05	031-300-060-382	1	MOUNTING ARM
06	050-350-110-116	1	STRAIN RELIEF ASSY, PG 13.5 RED, LONG THREAD, W/NUT+WASHER
07	000-312-043-141	2	LAMP ACCY, PILOT, BASIC HOUSING
08	003-051-403-423	5	SWITCH, PUSHBUTTON w/o LENS & BULB
09	000-311-023-114	7	LAMP, SPARE LIGHT BULB 12V
10	050-350-110-074	1	SWITCH ACCY, LENS CAP, RED (A2B)
11	050-350-110-073	1	SWITCH ACCY, LENS CAP, YELLOW (PREWARNING)
12	050-350-110-075	1	SWITCH ACCY, LENS CAP, RED (STOP/BUZZER OFF)
13	050-350-110-076	1	SWITCH ACCY, LENS CAP, ORANGE (LOAD)
14	050-350-110-077	1	SWITCH ACCY, LENS CAP, ORANGE (INFO)
15	050-350-110-078	1	SWITCH ACCY, LENS CAP, ORANGE (ANGLE)
16	050-350-110-079	1	SWITCH ACCY, LENS CAP, GREEN (ENTER)
17	003-051-903-364	1	KEYSWITCH W/KEYS, CONSOLE DS150
18	050-350-100-001	1	KEY, CONSOLE KEYSWITCH
19	050-150-110-002	1	SWITCH ACCY, KNOB WITH SCALE DISK 1-63
20	050-350-110-140	1	SWITCH ACCY, KNOB WITH SCALE DISK 1-16
21	050-350-110-049	1	ALARM, BUZZER, DS150 & DS350C CONSOLE
22	050-150-100-019	1	FACEPLATE, DS150 CONSOLE, LARGE DISPLAY (STD.)
23	050-000-050-309	1	GASKET, HOUSING
24	002-053-703-101	6	SCREW, 3mm x 10mm, PANHEAD, PHILLIPS FACEPLATE
25	031-300-100-007	1	SWITCH, TOGGLE FOR HOIST SELECT



NO.	PART NO.	QTY	DESCRIPTION
1	031-300-060-382	1	MOUNTING ARM
2	2-0002725.00	1	BUZZER
3	024-350-100-312	1	MOISTURE DRAINAGE PLUG
4	031-300-100-391	1	CONNECTOR, 7 PIN RECEPTACLE
5	031-300-100-024	1	DUST CAP

PAT AMERICA, Inc.
 1665 ORCHARD DRIVE
 CHAMBERSBURG, PA 17201

CONSOLE ASSY, DS160
 WITH MOUNTING ARM

GENERAL TOLERANCES X.XX = 0.01
 X.XXX = 0.005

BY APV DATE P/N 031-300-060-362
 APPROVED CHRIS HERTZLER SB 10/5/01
 SCALE: NONE SHEET: 1 OF 1
 SIZE: DWG NO.

REV A 031 300 02 0362

01-285
 C.A.G.E. 79760

PAT America Inc. reserves proprietary rights to this drawing and to the data shown thereon. The content of PAT America Inc. This drawing is subject to technical modification without prior notice.