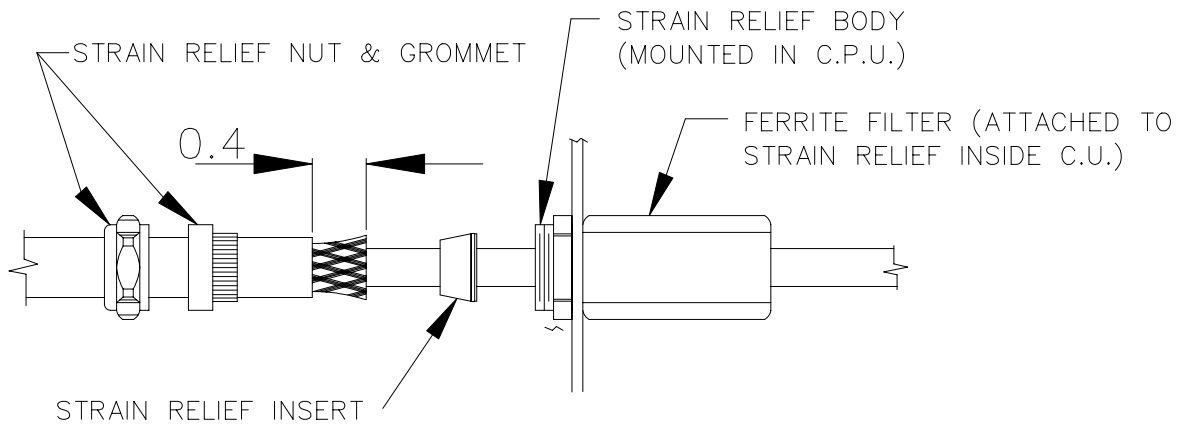
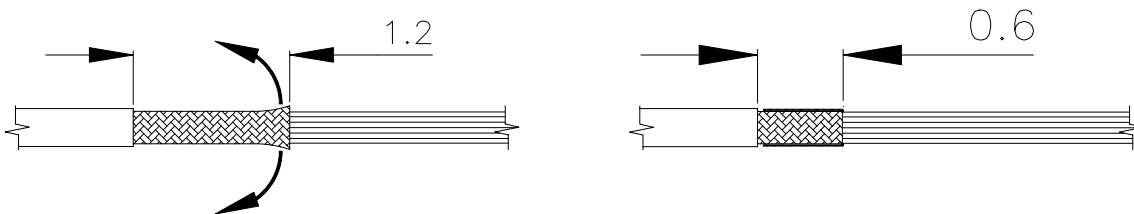


PROCEDURE - STRAIN RELIEF INSTALLATION

OUTTER SHIELD GROUNDED AT STRAIN RELIEF WITH FERRITE FILTER



INNER SHIELD GROUNDED ON CONNECTION BOARD



CUT INNER SHIELD BACK TO APPROXIMATELY 1.2 INCH.
THEN FOLD INNER SHIELD BACK TO INNER JACKET,
SO THE INNER SHIELD IS 0.6 INCHES IN LENGTH.

