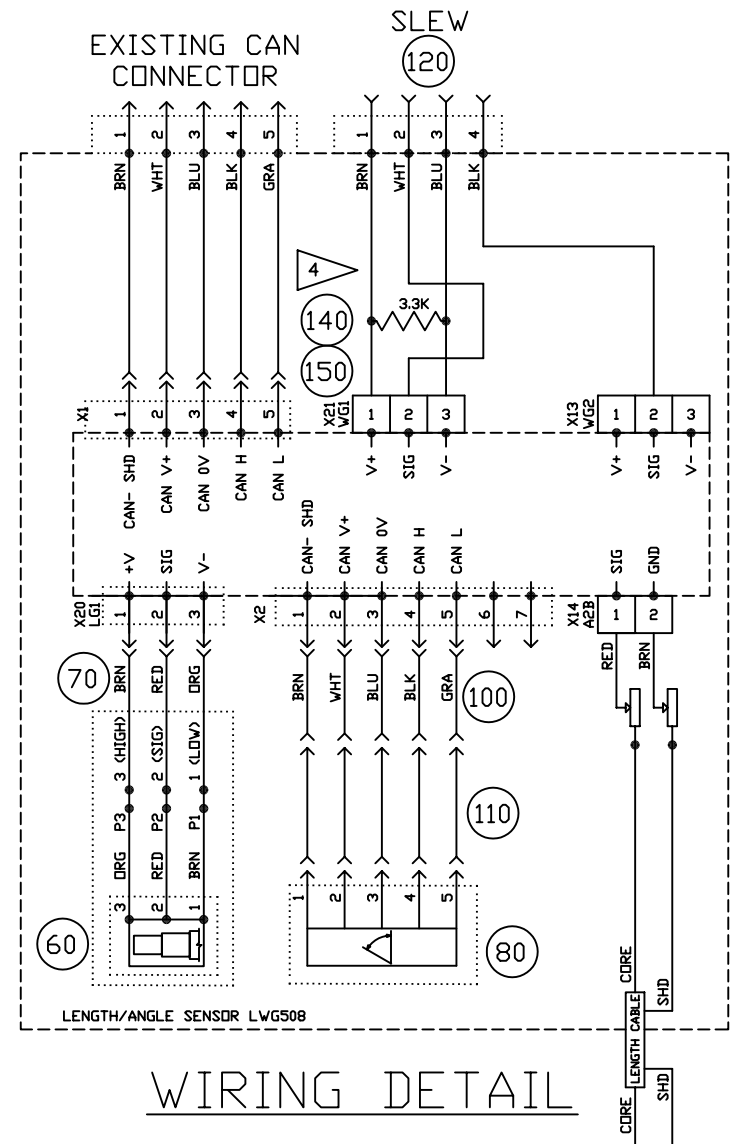
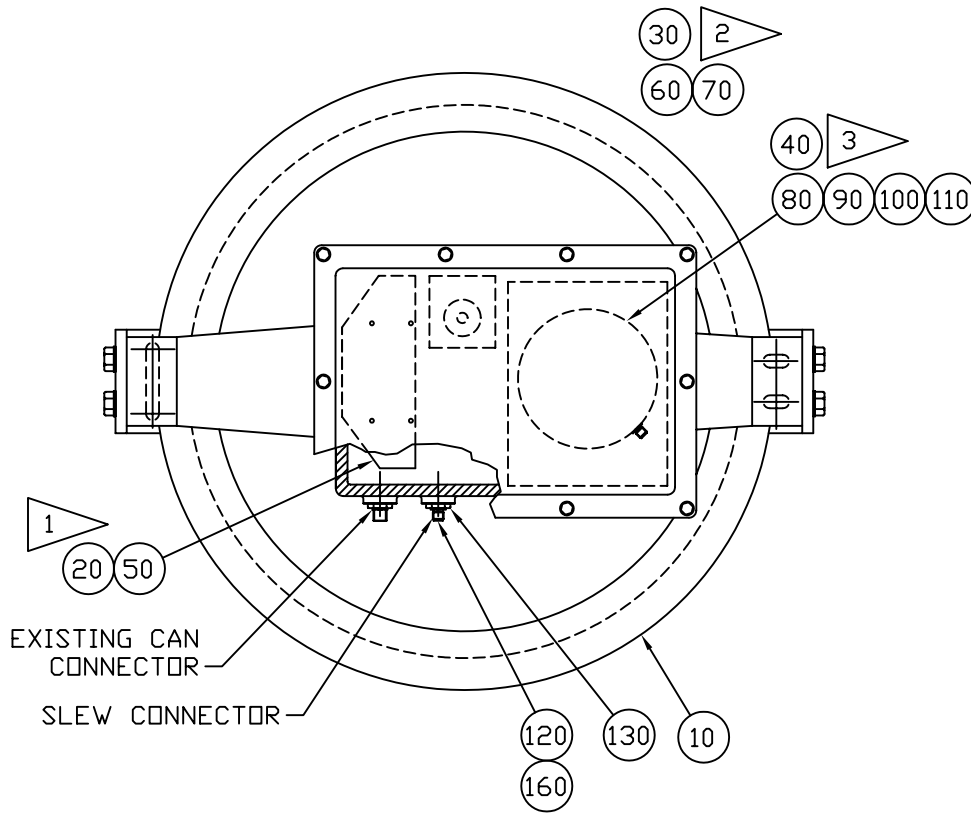


REV	ECN	DESCRIPTION	BY	APV	DATE
A	06-011	CHG TERM. NUMS, ADD ITEM 80, REM. BOM, UPDATE TB	MWS		01.17.06
B	06-032	REWORK LENGTH POT. AND ANGLE SENSOR	MWS		02.15.06



WIRING DETAIL

NOTES:

- 1 REMOVE EXISTING ITEM 20 (PCB) AND INSTALL ITEM 50 (PCB).
- 2 REMOVE EXISTING ITEM 30 (LENGTH POT.) AND INSTALL ITEM 60 (LENGTH POT. W/ BOARD) AND ITEM 70 (3-POLE CABLE ASSY). NOTE: DESOLDER 3-WIRE LEAD FROM LENGTH POT. PCB (ITEM 60) AND SOLDER ON ITEM 70 PER THE WIRING DETAIL.
- 3 REMOVE EXISTING ITEM 40 (WG143 ANGLE SENSOR) AND INSTALL ITEM 80 (WGC090 ANGLE SENSOR), ITEM 90 (WGC090 MTG PL), ITEM 100 (CABLE ASSY) AND ITEM 110 (CABLE ASSY).
- 4 COVER ALL SOLDERED CONNECTIONS WITH ITEM 150 (1/8" HEATSHRINK TUBING, COLEFLEX STS221 OR EQUIVALENT).

Hirschmann Electronics, Inc. ECS Division 1865 ORCHARD DRIVE CHAMBERSBURG, PA 17201	TITLE CABLE REEL ASSY LWG508 w/ 104 BOARD AND M12	
	GENERAL TOLERANCES ECN: 06-002 060723	
Hirschmann Electronics, Inc. reserves proprietary rights to this drawings and to the data shown thereon. The drawing and data are confidential and are not to be used or reproduced without the written consent of Hirschmann Electronics, Inc. This drawing is subject to technical modification without notice. C.A.G.E. 79760	IN. DIM. DEC. PLACES MM DIM. ±0.1" 1 PLACE DEC. ±2.5mm ±0.01" 2 PLACE DEC. ±0.25mm ±0.005" 3 PLACE DEC. ±0.13mm 1/16" FRACTION ±1.5mm	DRAWN MATT HAMMOND 01.06.06 APPROVED MIKE STAKE 01.11.06 SCALE: NONE SHEET: 1 OF 1 DWG NO. 060723
	REV B	