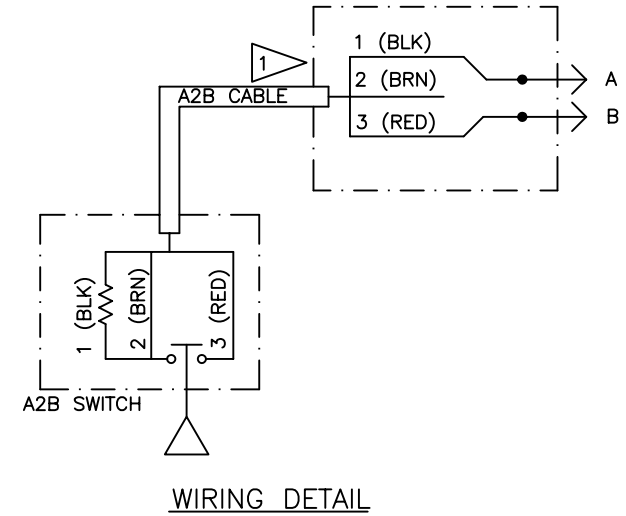
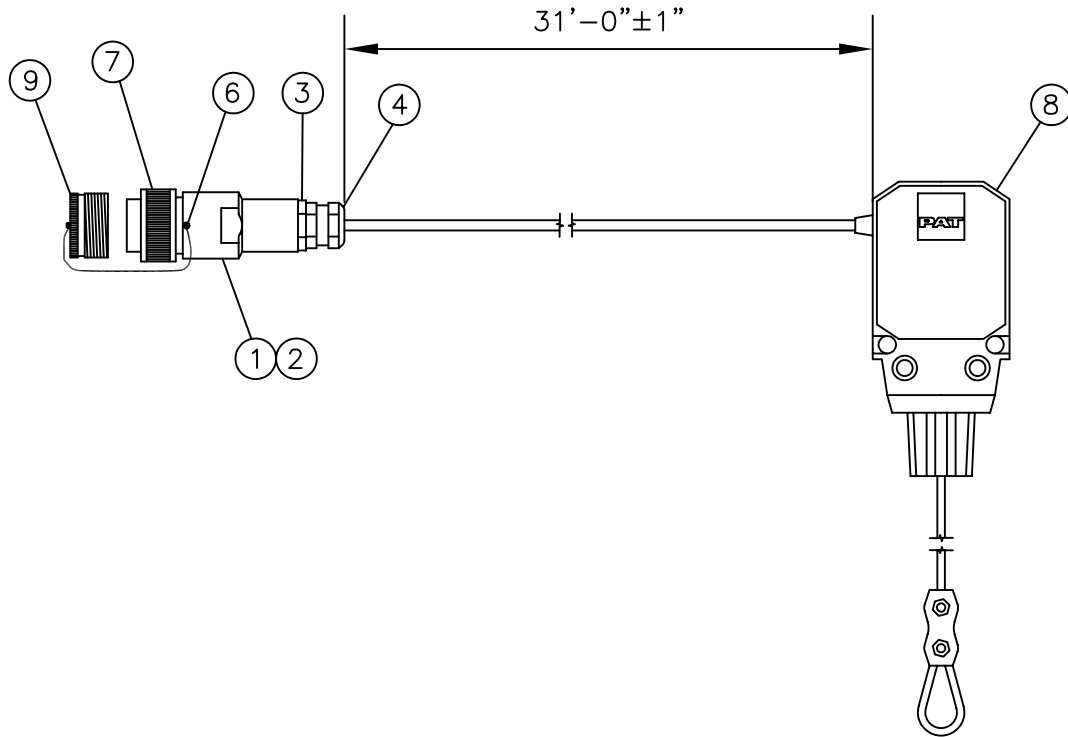



ITEM	PART NUMBER	QTY	DESCRIPTION
1	003-101-013-001	1	CONNECTOR ACCY, HOUSING, #16-PG.11 (METAL)
2	020-903-200-200	1	HARDWARE, O-RING SIZE 16 HOUS-ING (20x2mm)
3	000-214-261-109	1	STRAIN RELIEF, PG11/PG 9REDUCER
4	021-441-060-409	1	STRAIN RELIEF, PG 9 4-6mm, YELLOW/WHITE
5	031-300-100-110	31	CABLE ACCY, CONDUIT, 1/4"BLACK
6	031-300-100-447	1	SCREW, 3mm x 5mm PH
7	031-300-100-531	1	CONNECTOR, CANNON 2 PIN 16-04PPLUG MALE CA3106F16S-4P-F42)
8	031-002-060-014	1	SWITCH, A2B, W/O CRIMP, CABLELENGTH 32'
9	123-429-900-400	1	CONNECTOR ACCY, CAP&CHAIN #16CABLE END MS25042-16DA



NOTES:

1 OUTER SHIELD CONNECTED TO STRAIN RELIEF INSERT

 Hirschmann Electronics, Inc. ECS Division 1685 ORCHARD DRIVE CHAMBERSBURG, PA 17201	TITLE A2B SWITCH ASSY, 31 FT WITH 2-PIN CANNON PLUG	
	GENERAL TOLERANCES	ECN 05-165
IN. DIM. DEC. PLACES MM DIM.	DRAWN MIKE STAKE	DATE 09.19.05
$\pm 0.1"$ 1 PLACE DEC. $\pm 2.5mm$	APPROVED	SCALE: NONE
$\pm 0.01"$ 2 PLACE DEC. $\pm 0.25mm$	SCALE: NONE	SHEET: 1 OF 1
$\pm 0.005"$ 3 PLACE DEC. $\pm 0.13mm$	DWG NO.	REV
$1/16"$ FRACTION $\pm 1.5mm$	031 300 06 0665	—
C.A.G.E. 79760		