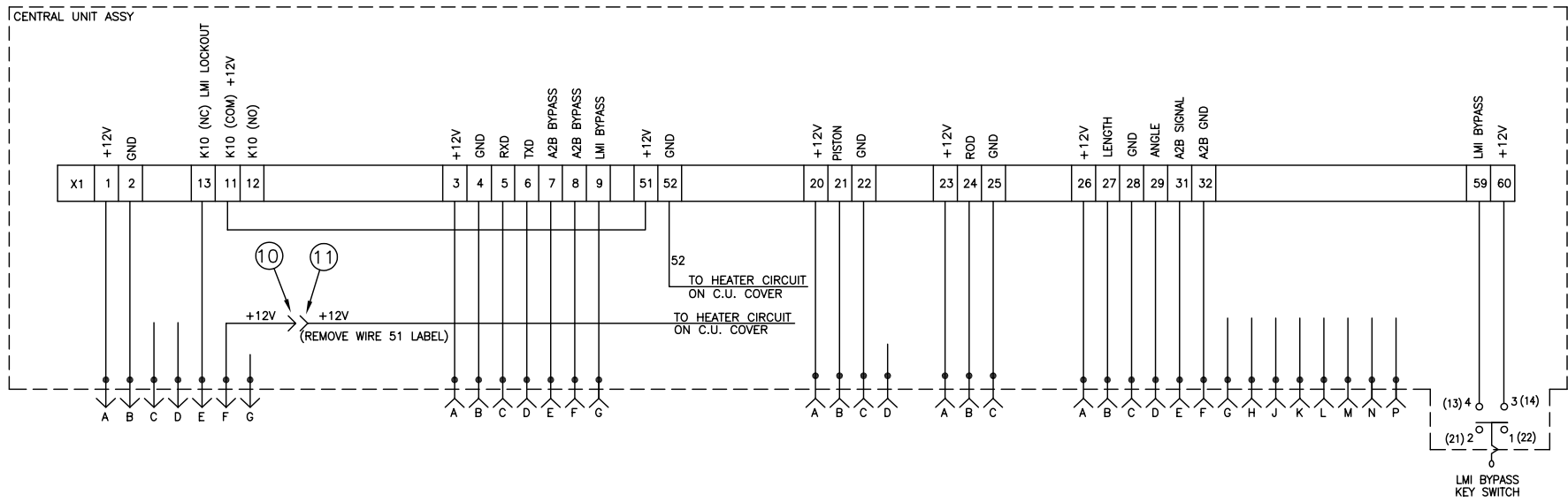


ITEM	PART NUMBER	QTY	DESCRIPTION
1	024-350-063-014	1.0	CENTRAL UNIT, DS350 MODULAR W/CANNON CONNECTORS 24V LINKBELT
2	024-350-063-015	1.0	CENTRAL UNIT, 24V MODULAR (LT)LOW TEMPERATURE RT875CC
3	000-304-140-112	1.0	RELAY, SHUTOFF 12V 20/30ABOSCH P/N 0 332 209 151
4	000-304-140-241	-1.0	RELAY, SHUT-OFF 24 V (BOSCH)
5	024-352-300-001	-1.0	MAINBOARD, MODULAR W/POWER SUPPLY, CONSOLE INTERFACE, DIG IN
6	024-352-300-020	-1.0	BOARD, MODULAR (D) ANALOG IN-PUT MODULE
7	024-351-300-007	-1.0	BOARD, MODULAR (B) CPU MODULE
8	024-351-300-016	-1.0	BOARD, DATAMODULE DS350C 2-4MGEPROMS
9	024-350-050-292	-1.0	HOUSING, CENTRAL UNIT, DS350MODULAR
10	031-010-100-153	1.0	TERMINAL, .250 DC/MI 14-16 AWGTAB MALE FULLY INSULATED
11	031-010-100-154	1.0	TERMINAL, .250 DC/FI 14-16 AWGTAB FEMALE FULLY INSULATED
12	031-300-100-291	1.0	EPROM, DATA, MODIFIED, ALL
13	GGMT V2.0	1.0	EPROM, SYSTEM GGMTV2.0071-350-140-720

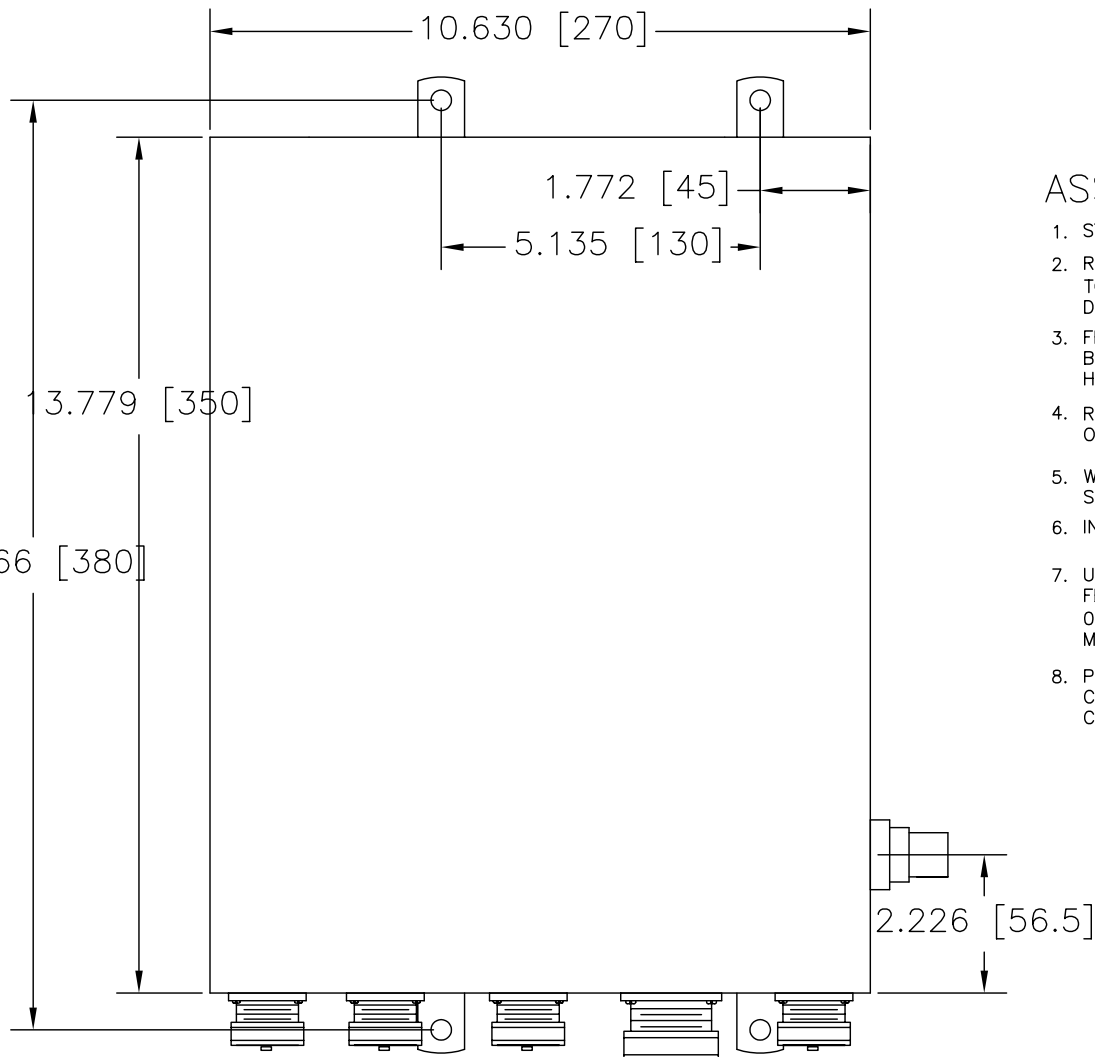
REV	ECN	DESCRIPTION	BY	APV	DATE
A	05-043	CHANGED CONSOLE POWER WIRING	MWS		02.23.05



Hirschmann Electronics, Inc. ECS Division 1605 ORCHARD DRIVE CHAMBERSBURG, PA 17201	TITLE CENTRAL UNIT ASSY LOW TEMP w/ CONNECTORS	
	GENERAL TOLERANCES ±0.1" 1 PLACE DEC. ±2.5mm ±0.01" 2 PLACE DEC. ±0.25mm ±0.005" 3 PLACE DEC. ±0.13mm 1/16" FRACTION ±1.5mm	ECN 04-189 APPROVED SCALE: NONE DWG NO. 031 300 06 0620

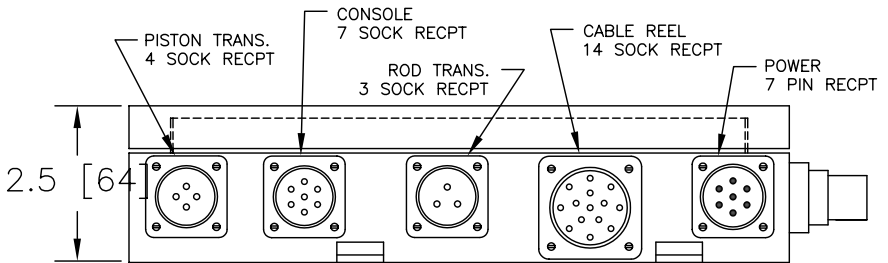
Hirschmann Electronics, Inc. reserves proprietary rights to this drawings and to the data shown thereon. The drawing and data are confidential and are not to be used or reproduced without the written consent of Hirschmann Electronics, Inc. This drawing is subject to technical modification with out notice. C.A.G.E. 79760

REV	ECN	DESCRIPTION	BY	APV	DATE
A	05-043	CHANGED CONSOLE POWER WIRING ON SHEET 2	MWS		02.23.05



ASSEMBLY NOTES:

1. START WITH C.U. 024-350-063-014.
2. REMOVE C.U. COVER, MAIN BOARD AND ATTACHED BOARDS, AND RETURN TO STOCK. REFER TO BOM FOR P/N'S. REMOVE C.U. P/N LABEL AND DISCARD.
3. FROM C.U. 024-350-063-015 REMOVE MAIN BOARD AND ATTACHED BOARDS, INSULATION BEHIND MAIN BOARD, AND INSTALL INTO C.U. HOUSING 024-350-063-014.
4. REMOVE 24V CUT OFF RELAY AND RETURN TO STOCK. INSTALL 12V CUT OFF RELAY.
5. WIRE RECEPTACLES IN BOTTOM OF C.U. HOUSING PER DIAGRAM ON SHEET 2.
6. INSTALL SYSTEM AND DATA SOFTWARE.
7. USE C.U. COVER FROM C.U. 024-350-063-015 WITH HEATERS. REMOVE FEMALE FASTON FROM WIRE LABELED 51 AND INSTALL FULLY INSULATED 0.25" FULLY INSULATED FEMALE FASTON. REMOVE AND DISCARD LABEL MARKER 51 FROM THE WIRE. LABEL THE WIRE +12V.
8. PRIOR TO INSTALLING THE C.U. COVER, CONNECT WIRE 52 FROM HEATING CIRCUIT TO TERMINAL 52 IN THE C.U. AND WIRE LABELED +12V TO WIRE IN C.U. PER DIAGRAM ON SHEET 2.



Hirschmann Electronics, Inc. ECS Division 1805 ORCHARD DRIVE CHAMBERSBURG, PA 17201	TITLE CENTRAL UNIT ASSY LOW TEMP w/ CONNECTORS	
	GENERAL TOLERANCES ±0.1" 1 PLACE DEC. ±2.5mm ±0.01" 2 PLACE DEC. ±0.25mm ±0.005" 3 PLACE DEC. ±0.13mm 1/16" FRACTION ±1.5mm	ECN: 04-189 031-300-060-620 DRAWN: MIKE STAKE APPROVED: SCALE: NONE DWG NO.: 031 300 06 0620

Hirschmann Electronics, Inc. reserves proprietary rights to this drawings and to the data shown thereon. The drawing and data are confidential and are not to be used or reproduced without the written consent of Hirschmann Electronics, Inc. This drawing is subject to technical modification with out notice. C.A.G.E. 79760