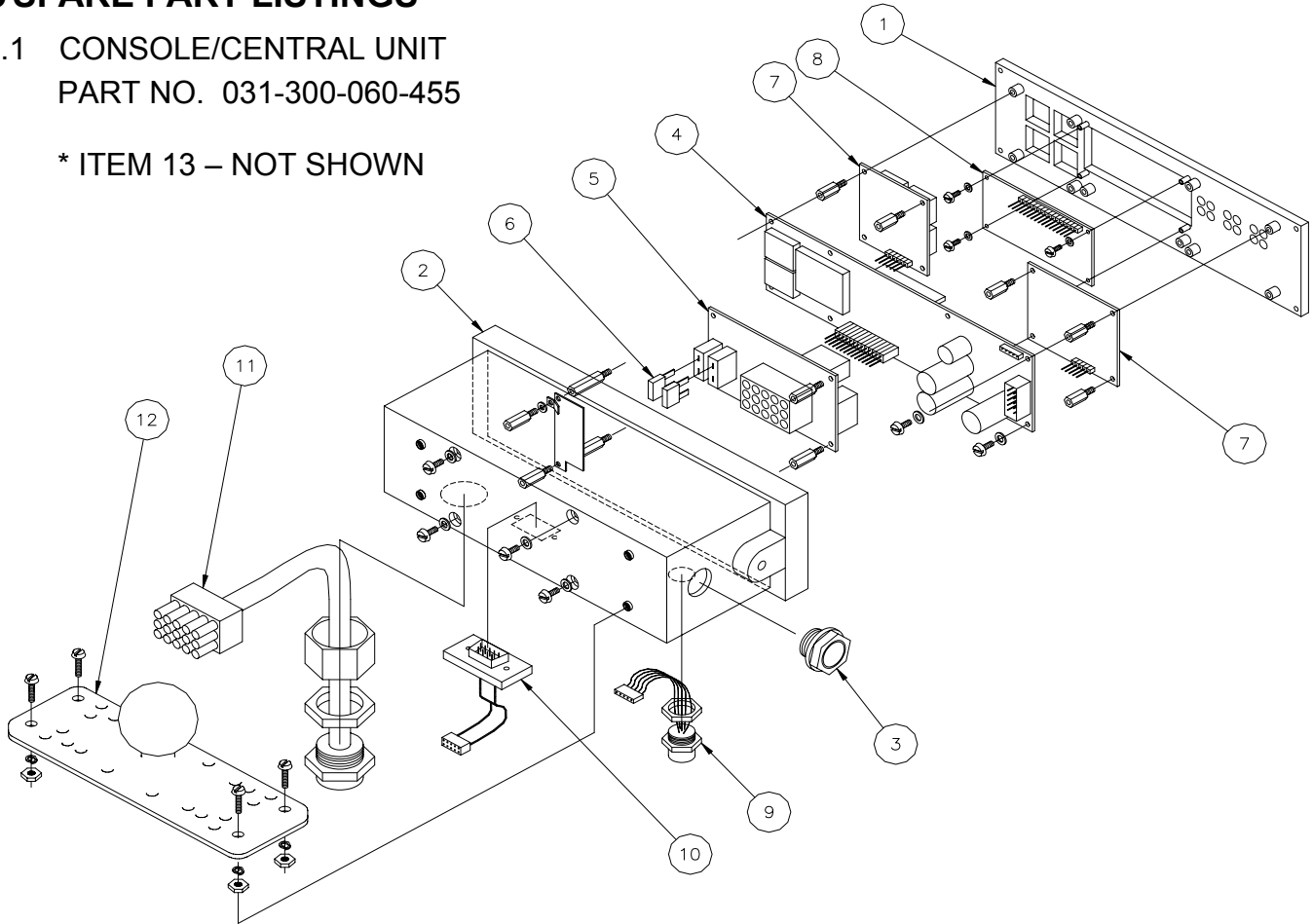


15 SPARE PART LISTINGS

15.1 CONSOLE/CENTRAL UNIT PART NO. 031-300-060-455

* ITEM 13 – NOT SHOWN



NO.	PART NO.	QTY	DESCRIPTION
1	024-085-100-002	1	FRONTFACE, PREASSEMBLED
2	024-000-050-002	1	HOUSING, DS85
3	024-000-100-095	1	CENTRAL UNIT ACCY, MEMBRANE VENT, PG11
4	024-050-300-101	1	MAINBOARD, CAN w/o FLASH E-EPROM
5	024-050-300-106	1	CONNECTION BOARD
6	031-300-050-223	2	FUSE, 2 AMP
7	024-050-300-110	1	KEYBOARD
8	050-000-100-271	1	LC DISPLAY UNIT
9	092-000-060-390	1	CAN BUS CONNECTOR, 5-PIN FEMALE, 120 ohms
10	024-050-290-101	1	RIBBON CABLE ASSY
11	031-300-060-700	1	CABLE ASSEMBLY, W/ GROUND CONNECTIONS
12	031-300-060-696	1	MOUNTING ASSEMBLY, 1.5" BALL
13*	031-300-050-624	1	MOUNTING ARM, 4.63" DOUBLE SOCKET FOR 1.5" BALL



Cable assemblies not included with console:

1. Power Cable assembly (wiring harness)
PART NO. 031-300-060-443
2. CAN bus from console (90° connector) to pressure transducer block PART NO. 031-300-060-453
3. CAN bus from pressure transducer to angle sensor box
PART NO. 031-300-060-454 *(not shown)

See next page: