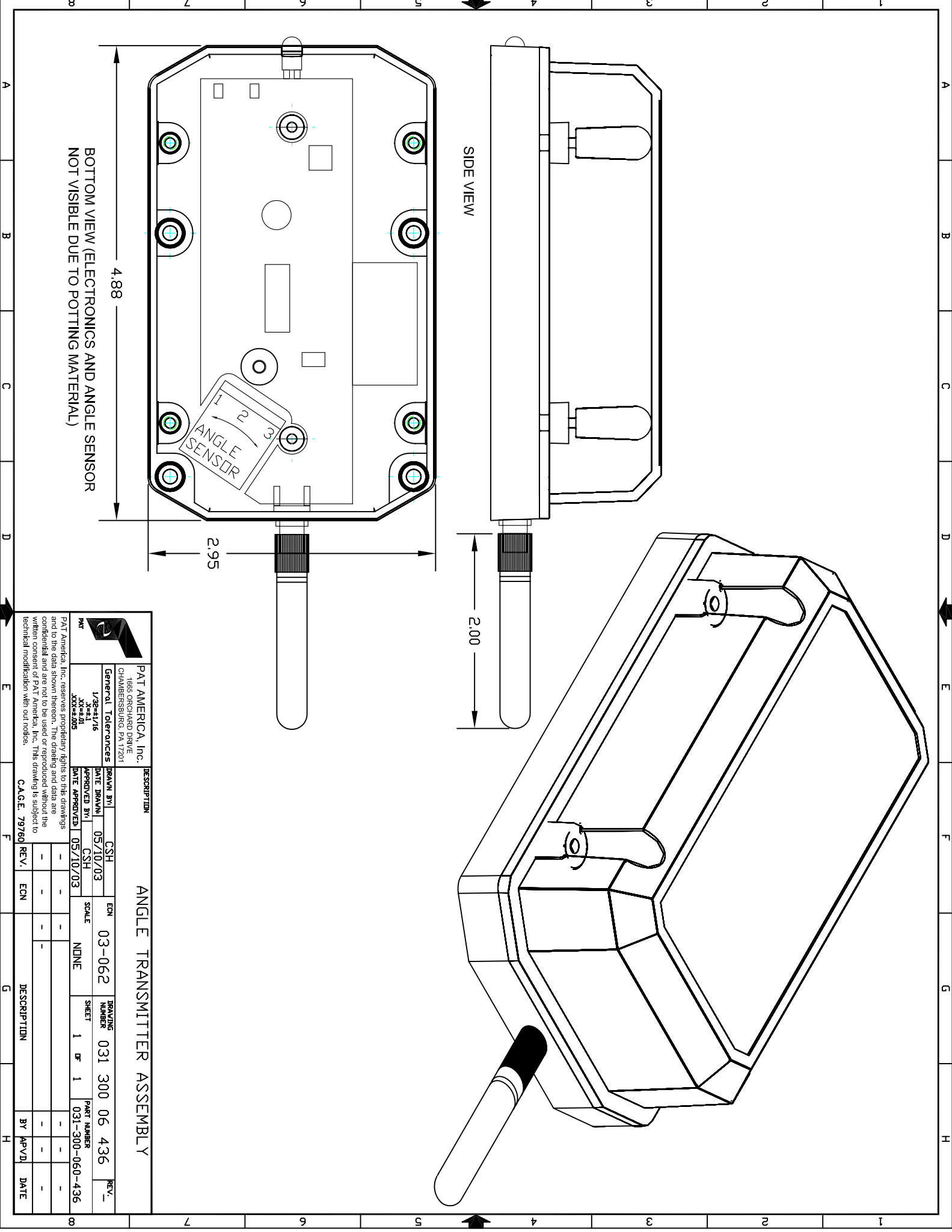


BOTTOM VIEW (ELECTRONICS AND ANGLE SENSOR NOT VISIBLE DUE TO POTTING MATERIAL)



		<b>PAT AMERICA, Inc.</b> 1655 ORCHARD DRIVE CHAMBERSBURG, PA 17201		<b>DESCRIPTION</b> ANGLE TRANSMITTER ASSEMBLY	
<b>General Tolerances</b> 1/2±1/16 X±.1 XXX±.015	<b>DATE DRAWN BY</b> 05/10/03 CSH	<b>ECN</b> 03-062	<b>SCALE</b> NONE	<b>SHEET NUMBER</b> 1 OF 1	<b>PART NUMBER</b> 031-300-06-436
<b>DATE APPROVED BY</b> 05/10/03 CSH	<b>DATE APPROVED</b> 05/10/03 ECN	<b>SCALE</b> NONE	<b>DESCRIPTION</b>	<b>BY</b> APVD	<b>DATE</b>

PAT America, Inc. reserves proprietary rights to this drawings and to the data shown hereon. The drawing and data are confidential and are not to be used or reproduced without the written consent of PAT America, Inc. This drawing is subject to technical modification with out notice.

C.A.G.E. 79760 REV. ECN