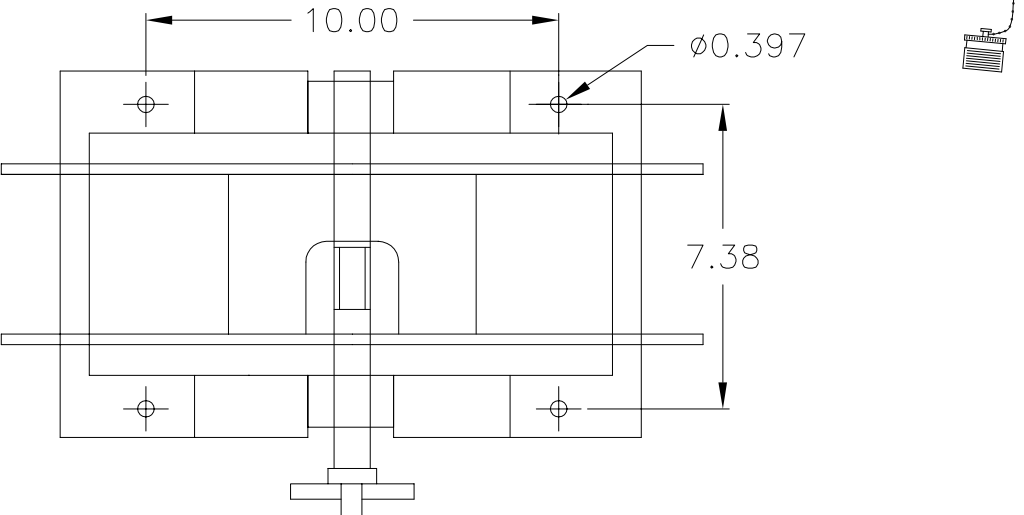
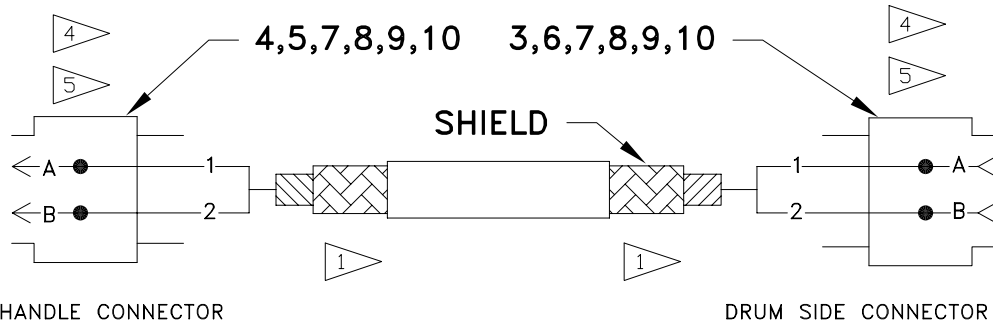
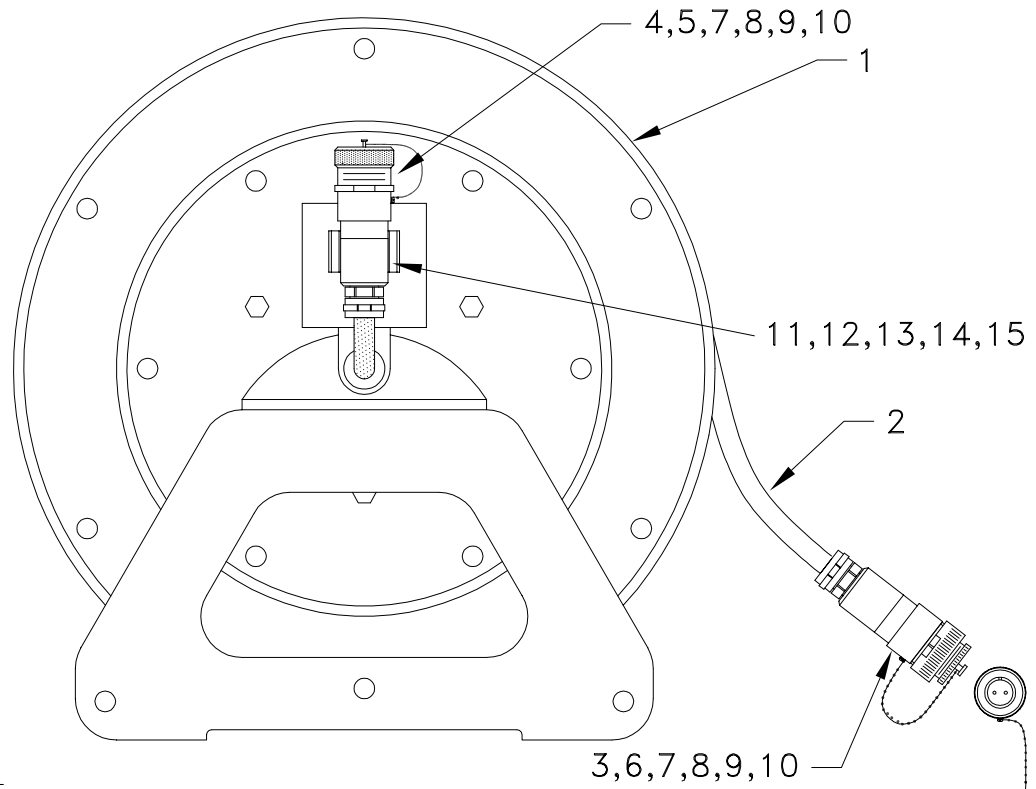


ITEM	PART NUMBER	DESCRIPTION	QTY
1	031-300-050-231	CABLE REEL, LATTICE BOOM	1
2	031-300-100-144	CABLE, 2 X 0.5 D.S. (PER FOOT)	305
3	031-300-100-393	CONNECTOR, CANNON 2 SOCKET PLUG #16	1
4	031-300-100-515	CONNECTOR, CANNON 2 PIN PLUG #16	1
5	031-300-100-024	CONNECTOR ACCY, CAP & CHAIN, #16	1
6	123-429-900-400	CONNECTOR ACCY, CAP & CHAIN, #16	1
7	020-903-200-200	HARDWARE, O-RING CONNECTOR HOUSING	2
8	031-300-100-447	SCREW, SLOTTED 3mm X 5mm, MACHINE	2
9	003-101-013-001	CONNECTOR ACCY, HOUSING, #16 PG 11	2
10	021-441-090-711	STRAIN RELIEF, PG 11 BLK/WHITE	2
11	031-300-100-740	HARDWARE, GRIPPER CLIP, 1-1.5" CLAMP	1
12	123-429-911-140	SCREW, #10-32 X 1 PHILLIPS HEAD	1
13	123-429-903-030	NUT, #8-32 HEX	1
14	000-208-040-053	WASHER, LOCK #10	1
15	000-207-010-053	WASHER, FLAT #10	1



NOTES:

- 1 OUTER SHIELD GROUNDED AT STRAIN RELIEF INSERT
- 2 SOLDER AN INSULATED WIRE TO INNER SHIELD AND CONNECTED AS SHOWN.
- 3 CUT AND INSULATE INNER SHIELD/WIRE
- 4 COVER ALL SOLDERED CONNECTIONS WITH 1/8" HEATSHRINK TUBING (COLEFLEX STS221 OR EQUIVALENT)
- 5 ADD DIELECTRIC LUBRICANT (e.g. NYOGEL 759G) TO INSIDE OF RECEPTACLES, PLUGS, AND ELECTRICAL CONNECTORS, TO IMPROVE PROTECTION AGAINST CORROSION AND MAL-FUNCTION DUE TO CONDENSATION.

IS = INNER SHIELD

		PAT AMERICA, Inc. 1665 ORCHARD DRIVE CHAMBERSBURG, PA 17201			CABLE REEL ASSEMBLY 300' 2 X0.5 SS FOR LATTICE BOOM		
		GENERAL X.XX = 0.01 TOLERANCES X.XXX = 0.005	P/N 031-300-060-049	DRAWN CHRIS HERTZLER 12/30/99	APPROVED CHRIS HERTZLER 12/30/99	SCALE: NONE SHEET: 1 OF 1	SIZE DWG NO.
REV ECN DESCRIPTION BY APV DATE	A 00-098 CHG REEL, CONNECTOR LOCATION, & ADD MTG DIM CSH CSH 07/14/00	99-174 C.A.G.E. 79760	A 031 300 06 0049 A	REV	REV	REV	