

# Lattice boom crane

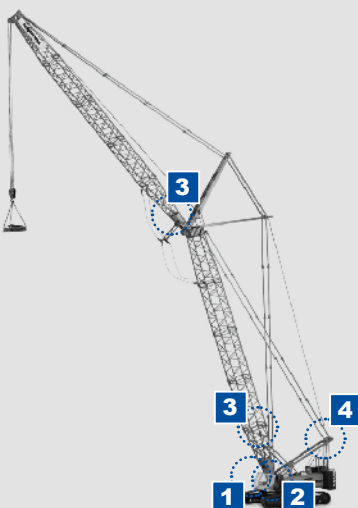
➤ Luffing jib, direct force measurement

## ➤ Requirements

- Load moment indication
- Load sensing in hoist rope (direct)
- Angle sensing at boom bottom
- Angle sensing at luffing jib
- Processing of digital inputs
- Graphical operation mode selection
- Main boom
- Fixed fly jib
- Fly jib can be tilted
- Main boom with quick-action stroke roller

## ➤ Product solution

Hardware	
Controllers	1 iFLEX 5
Consoles	2 iSCOUT expert compact
Sensors	3 gSENS WGC to main boom bottom
	3 gSENS WGC to luffing jib bottom
	4 Linerider at hoist rope 1 and hoist rope 2
Software	
Load moment indication	LMI application
	Graphical console application



## Features

- Menu-driven, graphical set-up state pre-selection
- Graphical information screen for currently selected set-up state
- LMI operational display with set-up state dependent, schematic crane configuration
- Output of status information and service screens as a language-neutral table or graphic
- Sensor calibration via console (password-protected service menu)
- User limits (radius, angle, height, slew angle)
- Virtual wall
- Switchover of load hook/hoisting winch without renewed OM selection
- Load on main boom with jib mounted
- Functionally identical substitute for DS350 Modular with graphical console IK1334

## Overview

		Sennebogen 7700	Sennebogen 620 ...	Linkbelt
Regulations	EU	■	■	
	USA	■		■
	Russia	■	■	
Requirements Load Moment Indication	Load moment indication	■	■	■
	Single Movement Release / cut-off	■	■	
	General cut-off			■
	Digital Inputs	■	■	■
	Digital Outputs	■	■	■
	Angle sensing at boom bottom	■	■	■
	Angle sensing at boom top	■		
	Load sensing in boom pendant	■	■	■
	Load sensing in derricking system	■	■	■
	Load sensing in hoist rope (direct)			■
Load sensing in luffing cylinder				
Requirements Console	Customized fully graphical OM selection (guided menu)			■
	Customized OM Configuration list / Numerical OM selection	■		
	Graphical OM Info screen			■
	Numerical OM selection (OM Code)		■	
	Real crane pictures	■		
	Schematic crane pictures		■	■
Standard functions	Virtual walls			■
	User limits (radius, angle, height, slew angle)	■	■	■
	Telescopic control			
	Sensor adjustment via console (protected)			■
	Status information by symbols	■	■	■
	Status information with additional text	■		
	Extended error messages (multi levels)			
	Servicescreens (multi level with text)	■		
	Servicescreens (tables or graphics)			
	Monitoring load on runner in main boom OM	■	■	
Special features	Interpolation of rated loads by main boom angle in luffing jib OM	■		■
	Superlift			
	Monitoring of inclination for ship mounting		■	
	Visualization of inclination by bubble level			
	Free fall function for hoist		■	
	Load on main boom with jib mounted			■
	Communication to crane controller			
	Visualization of status information from crane controller			
	Visualization of motor data (J1939)			
	Outrigger monitoring, display, automatic load chart selection			
	Camera input			
	Reduction of crane movement speed	■	■	
	context-sensitive on screen information			
Load spectrum counter, lift counter				
Operating hours counter				
On screen configuration for available hoist and OM				

### WIKA Mobile Control GmbH & Co. KG

Hertzstr. 32-34  
76275 Ettlingen, Germany  
Telephone: +49 (7243) 709-0  
sales.wmc@wika.com  
www.wika-mc.com